



*Light Rail (UK)



Commercial Specialists in Affordable & Sustainable Tramways

***Is a trading name for Light Rail Solutions UK 2024 Ltd, a not-for-profit organisation.**

A *VLR Shuttle Tram. Canvey Island to South Ben Fleet Station Line 1



Air
Quality
Poor?

www.applrguk.co.uk
Warrington, UK
07721378223, 01925 740675
E-mail jimh@jimmyharkins.com
©Light Rail (UK)



VLR MRC3 1 x Driver,
X 300 passengers

Podcast @ <https://www.railindustryconnect.co.uk/rail-industry-connected-hydrogen-trams-as-a-service-with-jim-harkins-light-rail-uk/>



Passenger Catchment areas within 15 minutes' walk



Self-powered new build traditional summer tram cars



City Cars (3) autonomously coupled, 300 passengers

DP World London Gateway Port – Part of Thames Freeport
Thames Enterprise Park (Poorly connected in need of development.
Free land for development)
Canvey Island = population c 40,000 on reclaimed land at risk of
flooding and at risk in case of emergency or evacuation.
Although close geographically the island has very poor access to
employment at e.g. DP London Gateway and Basildon.

Environment, improved air quality as a result of transfer from road to
tram.

Community, Fast, Clean & Affordable transport for local
communities.

Cost, Estimated at <£10M per track Km

Modal Switch is anticipated to remove 25%-34% of local traffic from
the road network

No Road/Tyre/Brake Particulates (NEE), genuine zero emission
vehicles.

No Air Pollution at Point of Use!

Why Green Hydrogen Trams?

Our ambitious vision for transforming the Thames Estuary region of North Kent, South Essex and East London.



A Coventry VLR example.

Trams have a proven record of getting people out of their cars whilst producing zero emissions and particulates at point of use and that these very light rail* (VLR) offers significant potential for enabling these benefits to be realised on a significant larger scale.

*** VLR trams are built to International Light Rail Standards and are a low cost starter line. Less than £10M per track Kilometre and are a significant Public Transport Legacy.**

The national delivery of an integrated transport system will often involve initiatives that span local authority and county boundaries and mechanisms for coordination at regional levels are needed to help promote and deliver this project.

There are proposals for a Shuttle line on Canvey island to Benfleet railway station line 1, for a very light rail line, a system involving vehicles on much lighter rails compared to current tramways with a dramatic reductions in construction costs, faster construction and less disruption.

Legal utilities are left in place



***Installation less than £10M per Km**

The largest share of transport emissions comes from cars, accounting for 38% a 20% reduction by 2030!...Transport Scotland Jan 2022

As Trams have a high modal switch circa 25% - 32%, this demonstrator line can achieve that target along this corridor

Statistics in Tram integrated Nottingham show that LEZs are not required

Samples of road space reallocation



The new track is laid just 30cm within the road's surface, minimising the need to relocate pipes and cables which is time-consuming and expensive.

This is achieved by taking advantage of cutting-edge materials, while still making use of standard rail parts

Hydrogen/electric buses can only be seen as a welcome interim solution in the short term with no transport legacy, they still remain a source of significant particulate pollution (*NEE) arising from the friction between tyres and road surfaces while steel wheels running on steel rails create zero emissions of this type.

***All UK Governments are aware of this (Greenwash) NEE pollution**

***39,000 folk died from Particulates**

Auchenshuggle Junction, Moore, Warrington,
Cheshire,
United Kingdom
01925 740675 07721378223
www.lightrailuk.co.uk

Light Rail Consultants, Transport Engineers,
Private Enterprise, Politicians, Academics,
Environmentalists and others.

Commercial specialists in low cost, VLR,
affordable & sustainable tramways

"if you can't get to places, you can't do things: and the things you can't do are important!"

Sponsored by Clean & Green Transport and Funded by Triton Hydrogen Ltd



*Light Rail (UK)



Commercial Specialists in Affordable & Sustainable Tramways

***Is a trading name for Light Rail Solutions UK 2024 Ltd, a not-for-profit organisation.**

A *VLR Shuttle Tram. Canvey Island to Basildon Bus Station Line 2



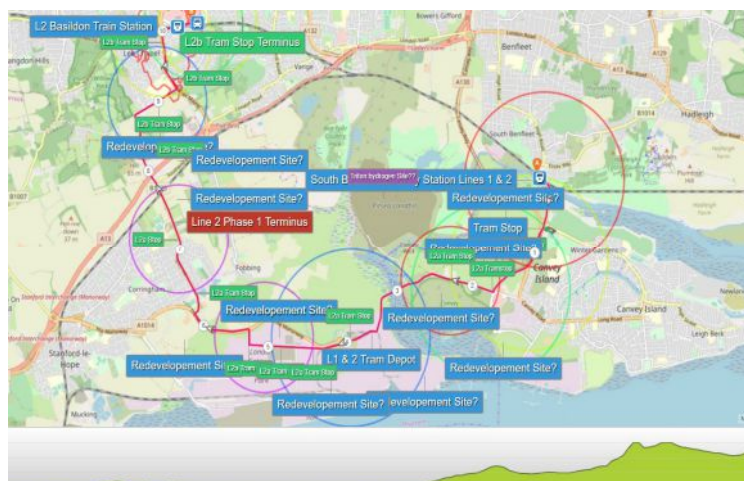
Or why a *Very Light Rail (VLR)
Cross Island Tram linking Benfleet railway station
without cars and no air pollution is better value to the
Public Purse
than yet another quick to fill up road bridge
Less than £10M per track Km



www.aplrguk.co.uk
Warrington, UK
07721378223, 01925 740675
E-mail jimh@jimmyharkins.com
©Light Rail (UK)



Podcast @<https://www.railindustryconnect.co.uk/rail-industry-connected-hydrogen-trams-as-a-service-with-jim-harkins-light-rail-uk/>



15 minute walk passenger catchment circle; map not to scale; guidance only

Basildon (The "City") of South Essex with key rail station
Basildon Hospital – Major general hospital
Corringham – new housing and rail station proposed (Land Value Capture)
DP World London Gateway Port – Part of Thames Freeport
Thames Enterprise Park (Poorly connected in need of development. Free land for development)
Canvey Island = population c 40,000 on reclaimed land at risk of flooding and at risk in case of emergency or evacuation.
Although close geographically the island has very poor access to employment at e.g. DP London Gateway and Basildon.

Environment, improved air quality as a result of transfer from road to tram.
Community, Fast, Clean & Affordable transport for local communities.
Cost, Estimated at <£10M per track Km

Modal Switch is anticipated to remove 25%-34% of local traffic from the road network
No Road/Tyre/Brake Particulates (NEE), genuine zero emission vehicles.

No Air Pollution at Point of Use!



Self-powered new build tradition summer tram cars



City Cars (3) autonomously coupled, 300 passengers

Why Green Hydrogen Trams? ©

Our ambitious vision for transforming the Thames Estuary region of North Kent, South Essex and East London.



A Coventry VLR example.

The national delivery of an integrated transport system will often involve initiatives that span local authority and county boundaries and mechanisms for coordination at regional levels are needed to help promote and deliver this project.

There are proposals for a Shuttle line on Canvey island to Benfleet railway station line 1, for a very light rail line, a system involving vehicles on much lighter rails compared to current tramways with a dramatic reductions in construction costs, faster construction and less disruption.

Legal utilities are left in place



***Installation less than £10M per Km**

The largest share of transport emissions comes from cars, accounting for 38% a 20% reduction by 2030!...Transport Scotland Jan 2022

As Trams have a high modal switch circa 25% - 32%, this demonstrator line can achieve that target along this corridor

Statistics in Tram integrated Nottingham show that LEZs are not required

Light Rail (UK)

E-mail Jimh@jimmyharkins.com

Auchenshuggle Junction, Moore,
Warrington, Cheshire,
United Kingdom
01925 740675 07721378223
www.lightrailuk.co.uk

Samples of road space reallocation



Light Rail Consultants, Transport Engineers,
Private Enterprise, Politicians, Academics,
Environmentalists and others.



The new track is laid just 30cm within the road's surface, minimising the need to relocate pipes and cables which is time-consuming and expensive.

This is achieved by taking advantage of cutting-edge materials, while still making use of standard rail parts

Hydrogen/electric buses can only be seen as a welcome interim solution in the short term with no transport legacy, they still remain a source of significant particulate pollution (***NEE**) arising from the friction between tyres and road surfaces while steel wheels running on steel rails create zero emissions of this type.

***All UK Governments are aware of this (Greenwash) NEE pollution**

***39,000 folk died from Particulates**

Commercial specialists in low cost, VLR, affordable & sustainable tramways

"if you can't get to places, you can't do things: and the things you can't do are important!"

Sponsored by Clean & Green Transport and Funded by Triton Hydrogen Ltd



*Light Rail (UK)



Commercial Specialists in Affordable & Sustainable Tramways

***Is a trading name for Light Rail Solutions UK 2024 Ltd, a not-for-profit organisation.**

A *VLR Shuttle Tram. Canvey Island to Basildon Bus Station All Routes



Or why a *Very Light Rail (VLR)
Cross Island Tram linking Benfleet railway station
without cars and no air pollution is better value to the
Public Purse
than yet another quick to fill up road bridge
Less than £10M per track Km



www.aplrguk.co.uk
Warrington, UK
07721378223, 01925 740675
E-mail jimh@jimmyharkins.com
©Light Rail (UK)



VLR MRC3 1 x Driver,
X 300 passengers

Podcast @<https://www.railindustryconnect.co.uk/rail-industry-connected-hydrogen-trams-as-a-service-with-jim-harkins-light-rail-uk/>



15 minute walk passenger catchment circle, Map not to scale or alignment and is for demonstration only

Line 1 Green/Blue Lines 2 & 3 Red/Blue

DP World London Gateway Port – Part of Thames Freeport
Thames Enterprise Park (Poorly connected by road, in need of development)

As a catalyst, these lines will provide local connectivity within the overall island speed limits and as car free access for housing and industrial development)

Canvey Island = population c 40,000 on reclaimed land at risk of flooding and at risk in case of emergency or evacuation. Sections of the tramway can be raised.

Environment, improved air quality as a result of transfer from road to tram, nationally circa 25% - 34% DfT

Although close geographically the island has very poor access to employment at e.g. DP London Gateway and Basildon.

Community, Fast, Clean Sustainable & Affordable transport for local communities.
Cost, Estimated at <£10M per track Km

Modal Switch is anticipated to remove 25%-34% of local traffic from the road network
No Road/Tyre/Brake Particulates (NEE), genuine zero emission vehicles.

No Air Pollution at Point of Use!



Self-powered new build traditional summer tram cars



City Cars (3) autonomously coupled, 300 passengers

Why Green Hydrogen Trams?

Our ambitious vision for transforming the Thames Estuary region of North Kent, South Essex and East London.



A Coventry VLR example.

The national delivery of an integrated transport system will often involve initiatives that span local authority and county boundaries and mechanisms for coordination at regional levels are needed to help promote and deliver this project.

There are proposals for a Shuttle line on Canvey island to Benfleet railway station line 1, for a very light rail line, a system involving vehicles on much lighter rails compared to current tramways with a dramatic reductions in construction costs, faster construction and less disruption.

Legal utilities are left in place



***Installation less than £10M per Km**

The largest share of transport emissions comes from cars, accounting for 38% a 20% reduction by 2030!...Transport Scotland Jan 2022

As Trams have a high modal switch circa 25% - 32%, this demonstrator line can achieve that target along this corridor

Statistics in Tram integrated Nottingham show that LEZs are not required

Light Rail (UK)

E-mail Jimh@jimmyharkins.com

Auchenshuggle Junction, Moore,
Warrington, Cheshire,
United Kingdom

01925 740675 07721378223

www.liahtailuk.co.uk

Samples of road space reallocation



Light Rail Consultants, Transport Engineers,
Private Enterprise, Politicians, Academics,
Environmentalists and others.



The new track is laid just 30cm within the road's surface, minimising the need to relocate pipes and cables which is time-consuming and expensive. This is achieved by taking advantage of cutting-edge materials, while still making use of standard rail parts

Hydrogen/electric buses can only be seen as a welcome interim solution in the short term with no transport legacy, they still remain a source of significant particulate pollution (***NEE**) arising from the friction between tyres and road surfaces while steel wheels running on steel rails create zero emissions of this type.

***All UK Governments are aware of this (Greenwash) NEE pollution**

***39,000 folk died from Particulates**

Commercial specialists in low cost, VLR, affordable & sustainable tramways

"if you can't get to places, you can't do things: and the things you can't do are important!"

Sponsored by Clean & Green Transport and Funded by Triton Hydrogen Ltd